



MONASH  
University

# Statistical models to identify trends in stream water quality in Victoria, Australia over 27 years

Anna Lintern

*Dr Danlu Guo (the ANU), Dr Rob Sargent (Monash University), Professor Andrew Western (UoM), Alysha Huxley (Scientell), Paul Wilson (DEECA), Judy Hagan (DEECA)*



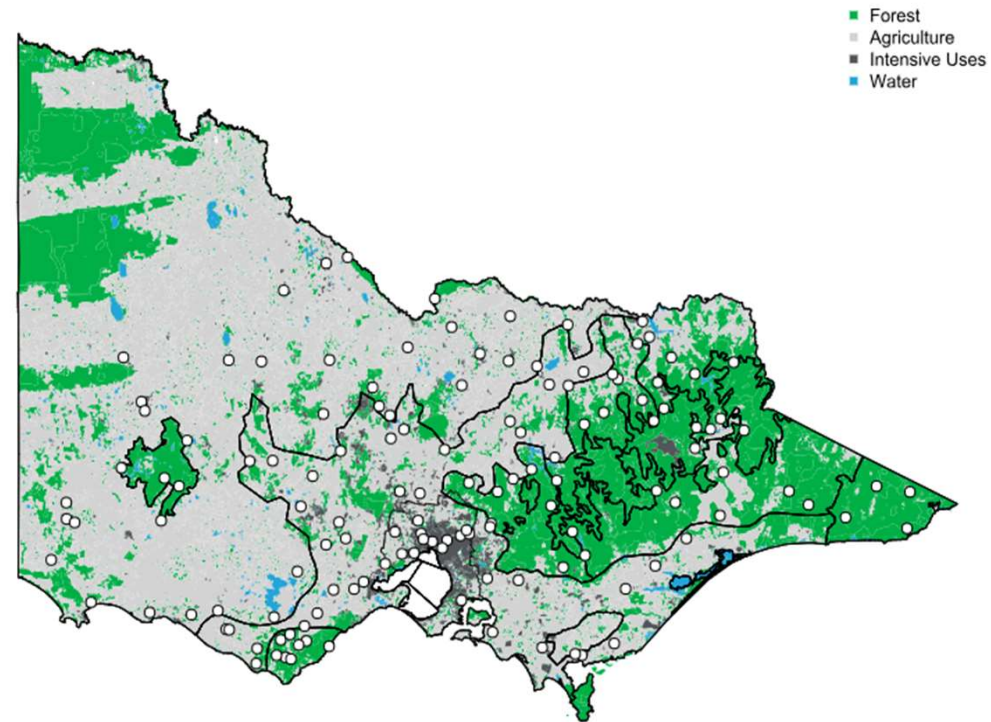
# The study

Explore water quality trends over time in Victoria between 1995-2021

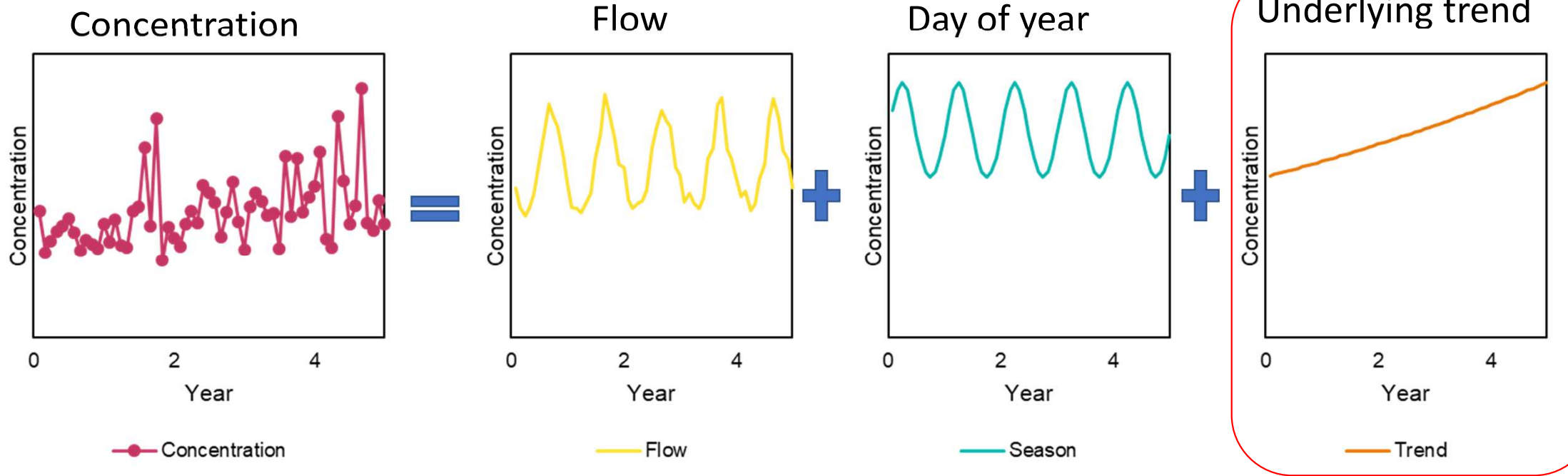
What are the 'underlying trends' in water quality in Victoria

***Water Quality Constituents:***

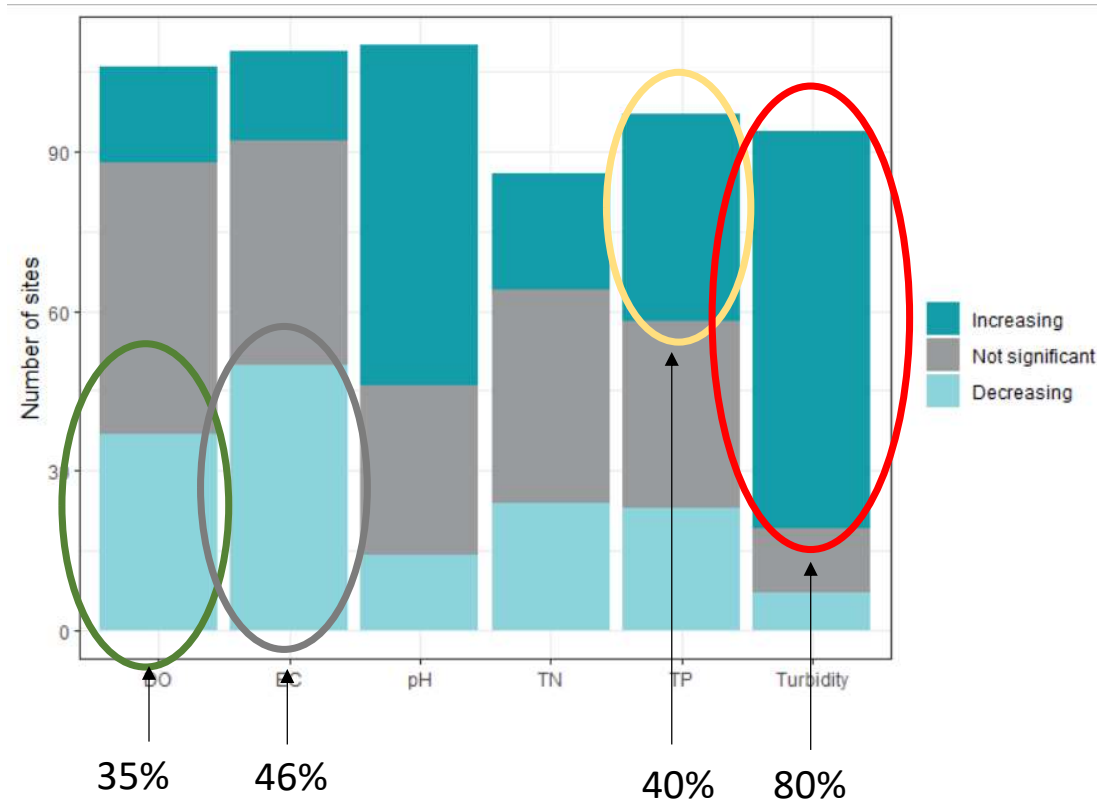
- Electrical Conductivity (EC)
- Turbidity
- Total Phosphorus (TP)
- Total Nitrogen (TN)
- pH
- Dissolved Oxygen (DO)



# Statistical models



# Overall picture of water quality in Victoria



# What does this mean?

- Some concerning water quality trends happening across Victoria that we need to keep an eye on